

**Paper Reference(s)    1BI0/1F**  
**Pearson Edexcel Level 1/Level 2 GCSE**  
**(9–1)**

**Biology**  
**Paper 1**  
**Foundation tier**

**Diagram Booklet**

**In the boxes below, write your name, centre number and candidate number.**

<b>Surname</b>					
<b>Other names</b>					
<b>Centre Number</b>					
<b>Candidate Number</b>					

## INSTRUCTIONS

There may be spare copies of some diagrams in case you need them.

**THIS DIAGRAM BOOKLET MUST BE  
RETURNED WITH THE QUESTION PAPER  
AT THE END OF THE EXAMINATION.**

# **Contents**

## **Page**

<b>5</b>	<b>Question 1(b)</b>
<b>6</b>	<b>Question 1(b) (Spare copy)</b>
<b>7</b>	<b>Question 1(c)</b>
<b>8</b>	<b>Question 1(c) (Spare copy)</b>
<b>9</b>	<b>Question 2(a)</b>
<b>10</b>	<b>Question 3(b)</b>
<b>11</b>	<b>Question 3(c)</b>
<b>12</b>	<b>Question 4(b)</b>
<b>13</b>	<b>Question 4(c)</b>
<b>14</b>	<b>Question 5(a)</b>
<b>15</b>	<b>Question 5(b)</b>
<b>16</b>	<b>Question 5(d)</b>
<b>17</b>	<b>Question 6(a)</b>

**(continued on the next page)**

**Contents continued.**

- 18 Question 6(b)(i)**
- 19 Question 6(b)(ii)**
- 20 Question 6(b)(ii) (Spare copy)**
- 21 Question 7**
- 22 Question 7(b)(ii)**
- 23 Question 8(b)**
- 24 Question 8(b) (Spare copy)**
- 25 Question 9(a)**
- 26 Question 10(a)**
- 27 Question 10(b)(ii)**

## Question 1(b)

**disease**

**main way the  
disease is spread**

**cholera**

• **in the air**

• **by animal vectors**

• **in body fluids**

**malaria**

• **by a vaccination**

• **in water**

## Question 1(b)

**disease**

**main way the  
disease is spread**

**cholera**

• **in the air**

• **by animal vectors**

• **in body fluids**

**malaria**

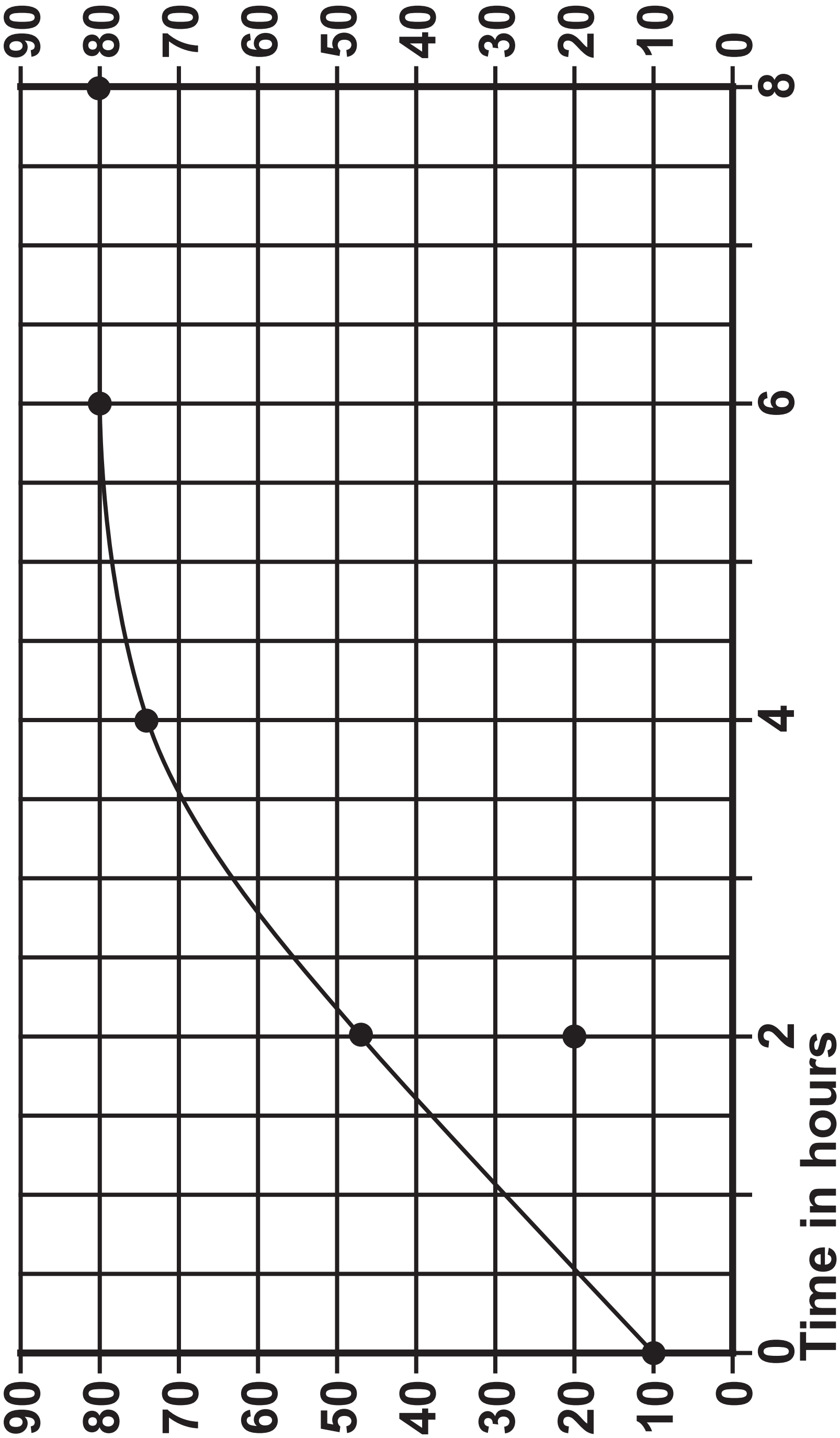
• **by a vaccination**

• **in water**

Question 1(c)  
FIGURE 2

Key: ●— results at 20 °C

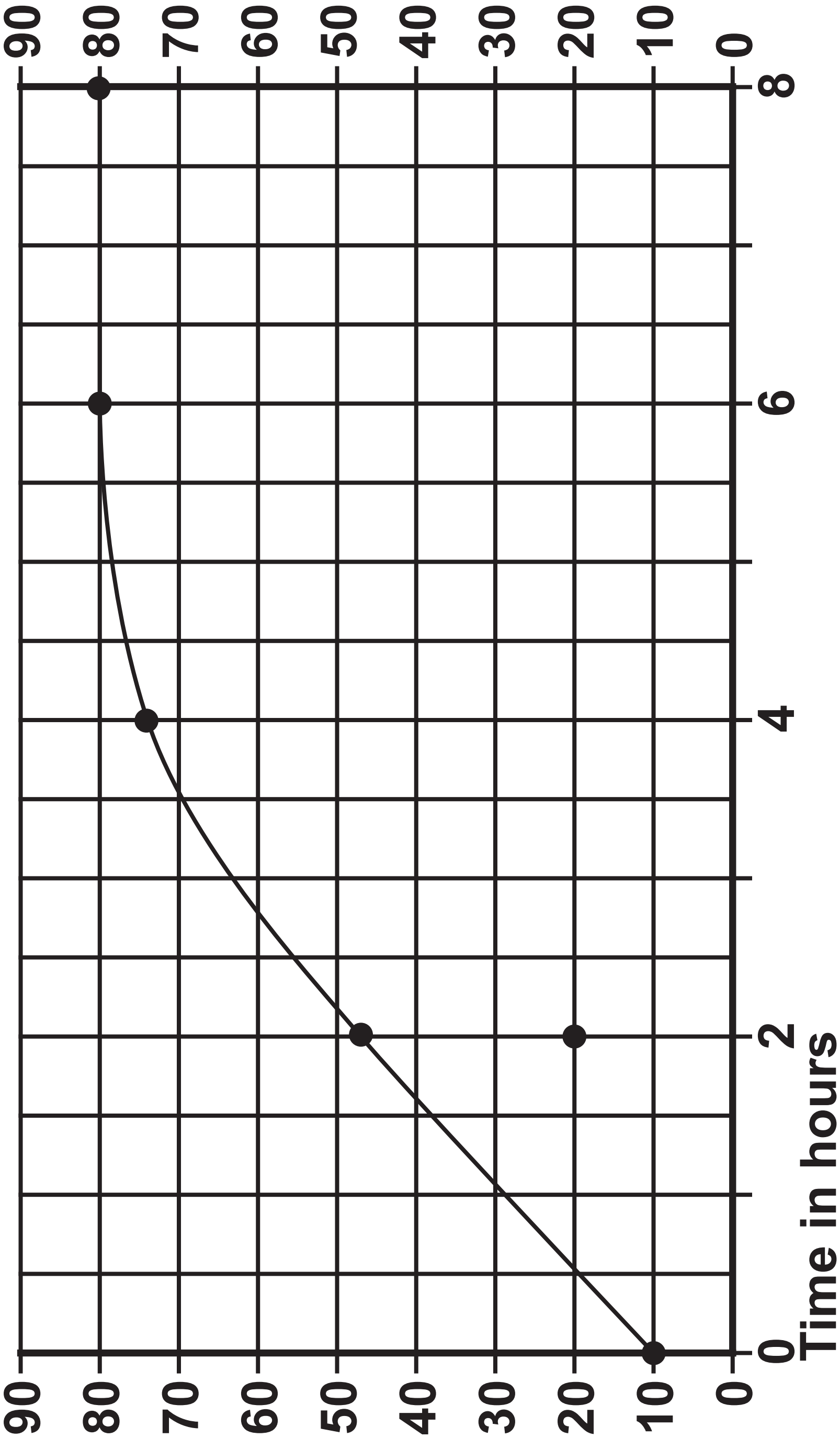
Number of bacteria in thousands



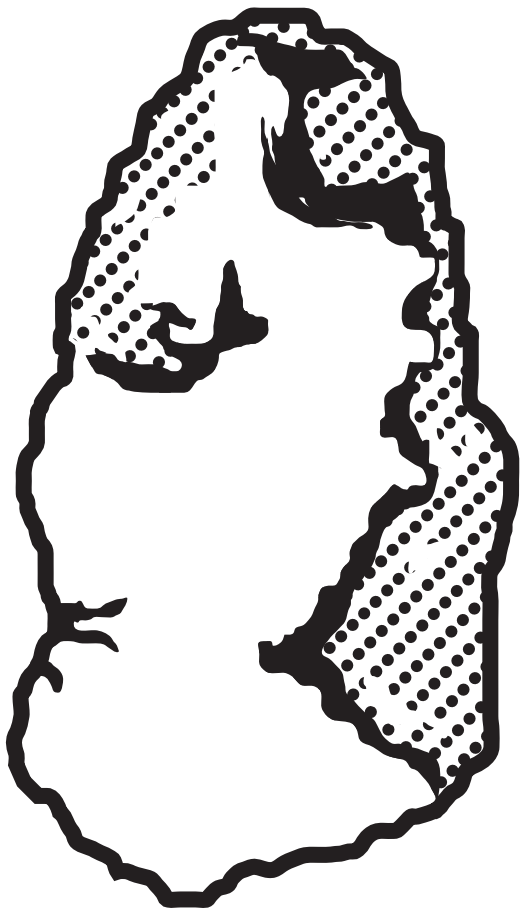
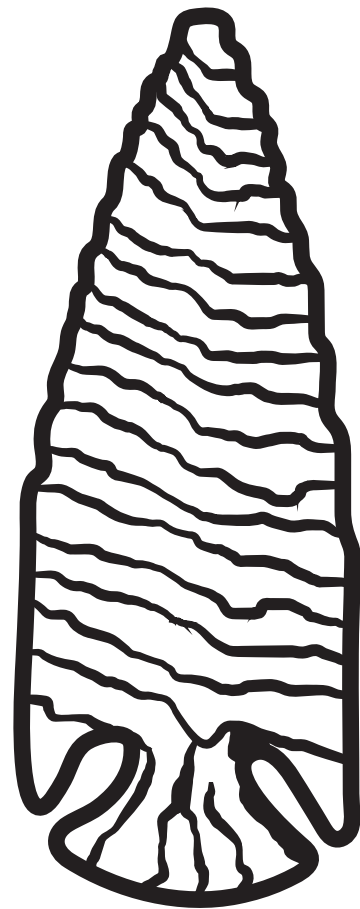
Question 1(c)  
FIGURE 2

Key: ●— results at 20 °C

Number of bacteria in thousands





**Question 2(a)****FIGURE 3****Tool P****FIGURE 4****Tool Q**

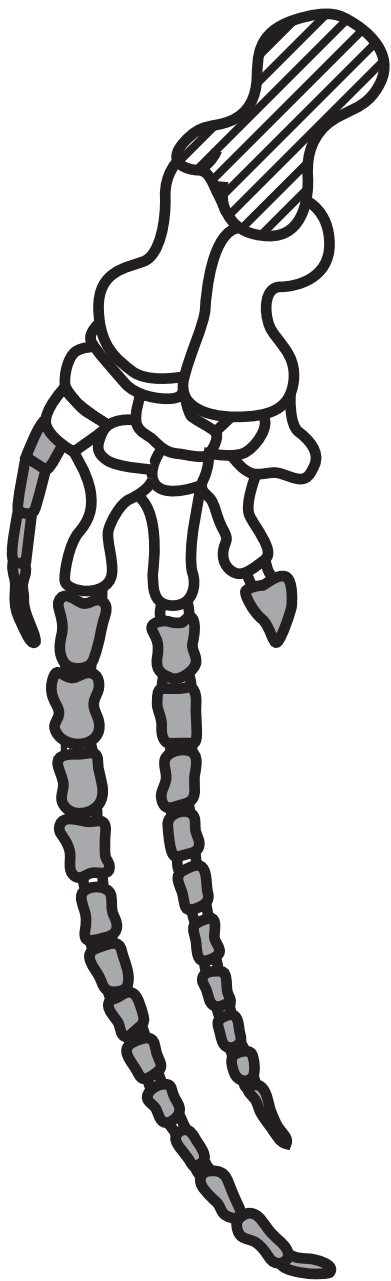
## Question 3(b)

FIGURE 5

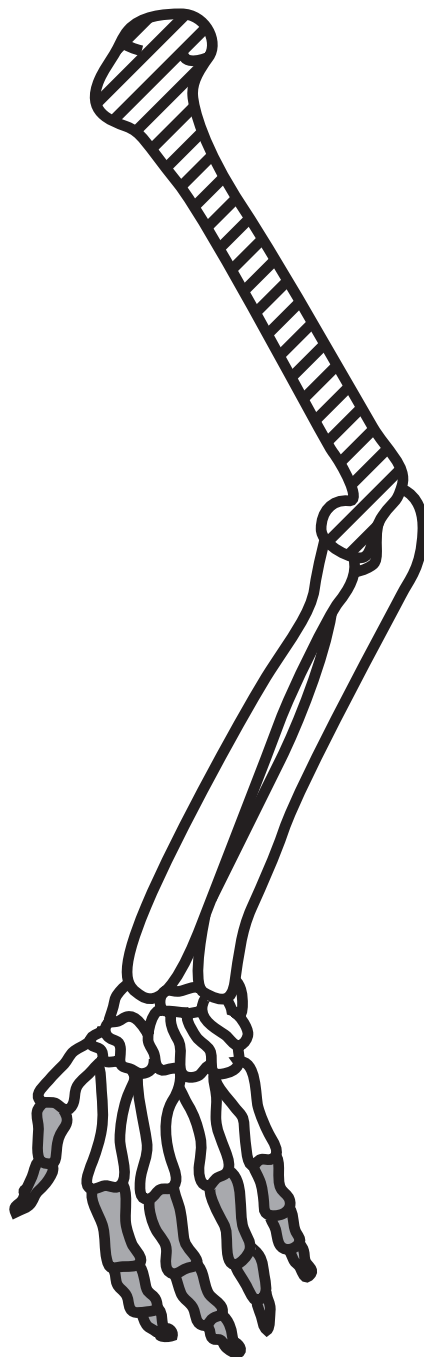
## Key

-  humerus
-  phalanges

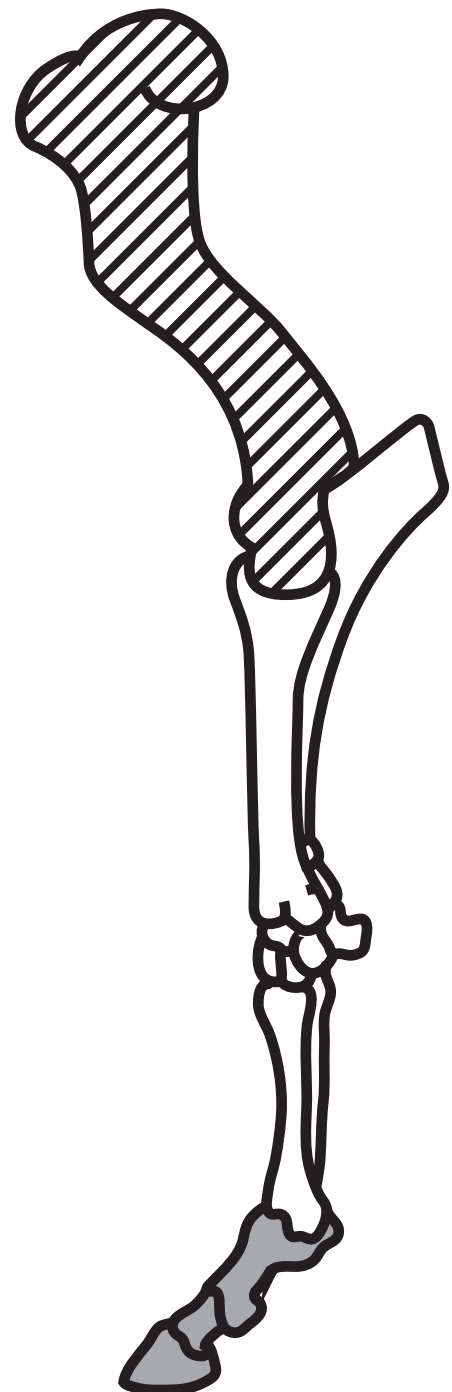
whale



human



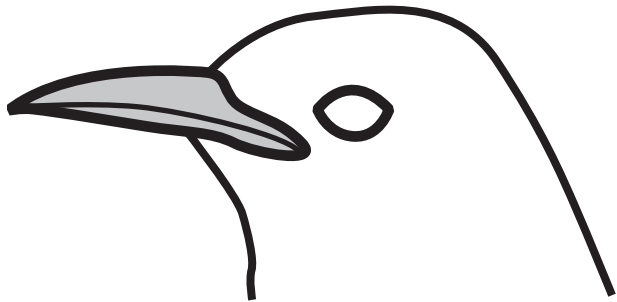
horse



## Question 3(c)

FIGURE 6

Species A



Species B

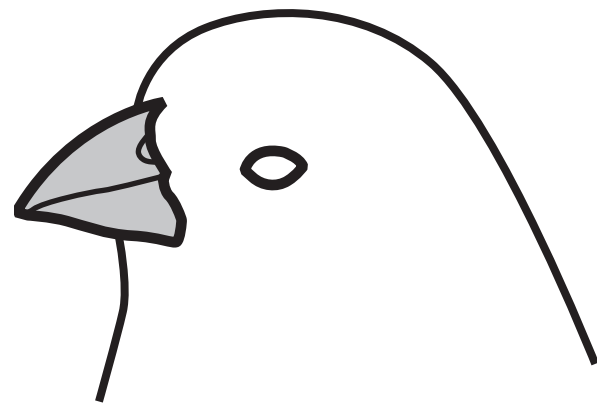
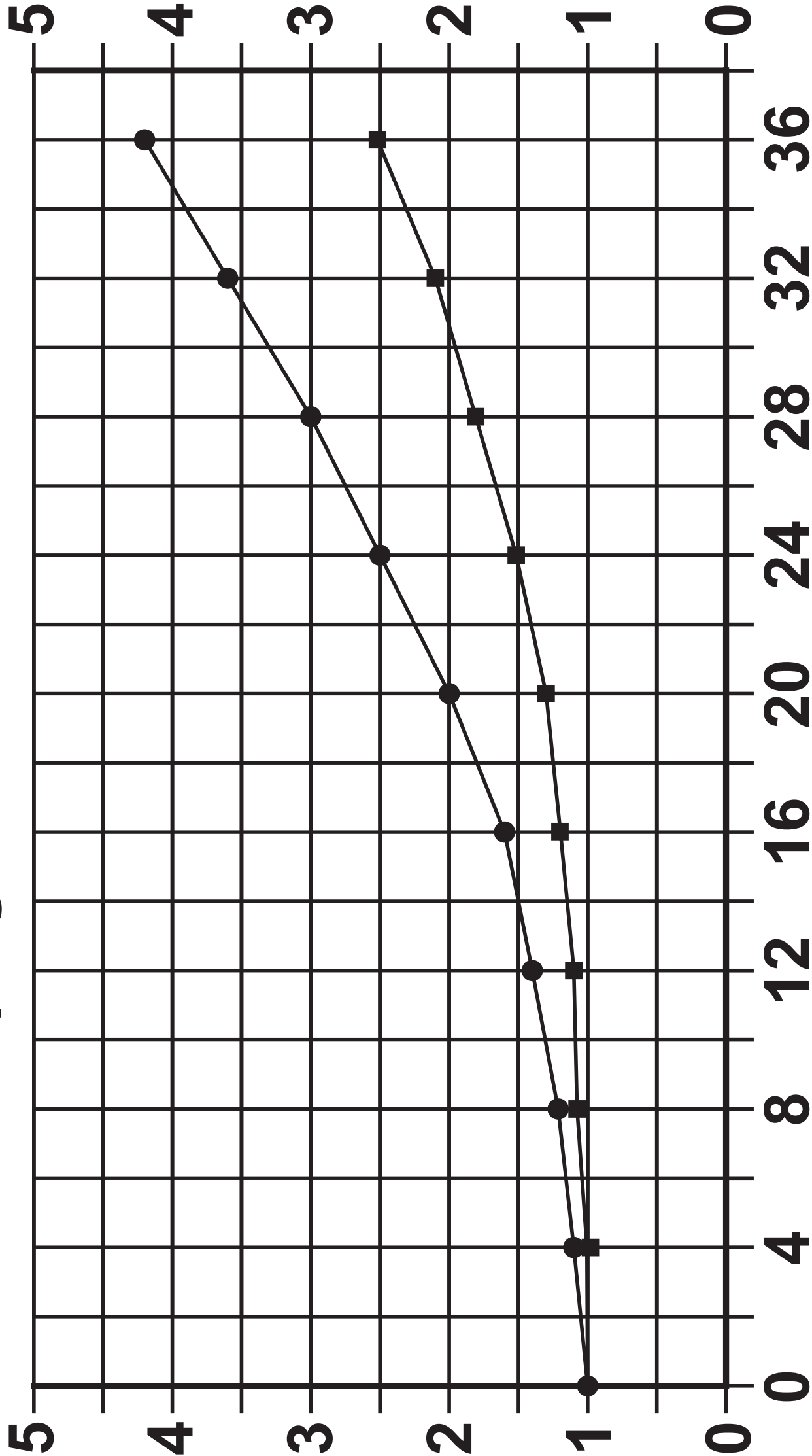


FIGURE 7

Key

- drinks alcohol on its own
- drinks alcohol with meals

Relative risk of developing cirrhosis of the liver



Number of units of alcohol consumed per week

## Question 4(c)

FIGURE 8

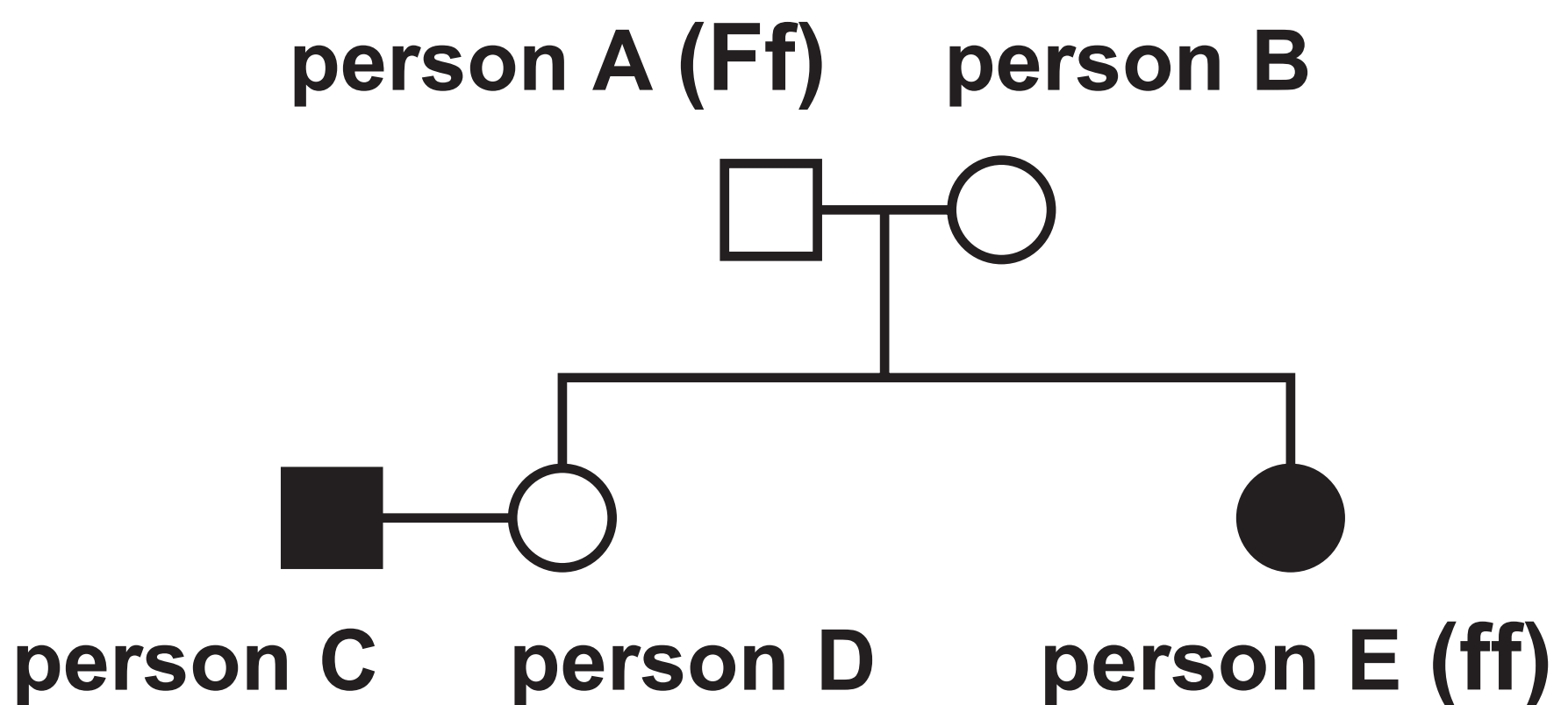
## Key

○ female without cystic fibrosis

● female with cystic fibrosis

□ male without cystic fibrosis

■ male with cystic fibrosis



## Question 5(a)

FIGURE 9



## Question 5(b)

FIGURE 10

Temperature in °C	Number of plantlets produced
5	0
10	0
15	2
20	12
25	8
30	0

FIGURE 11

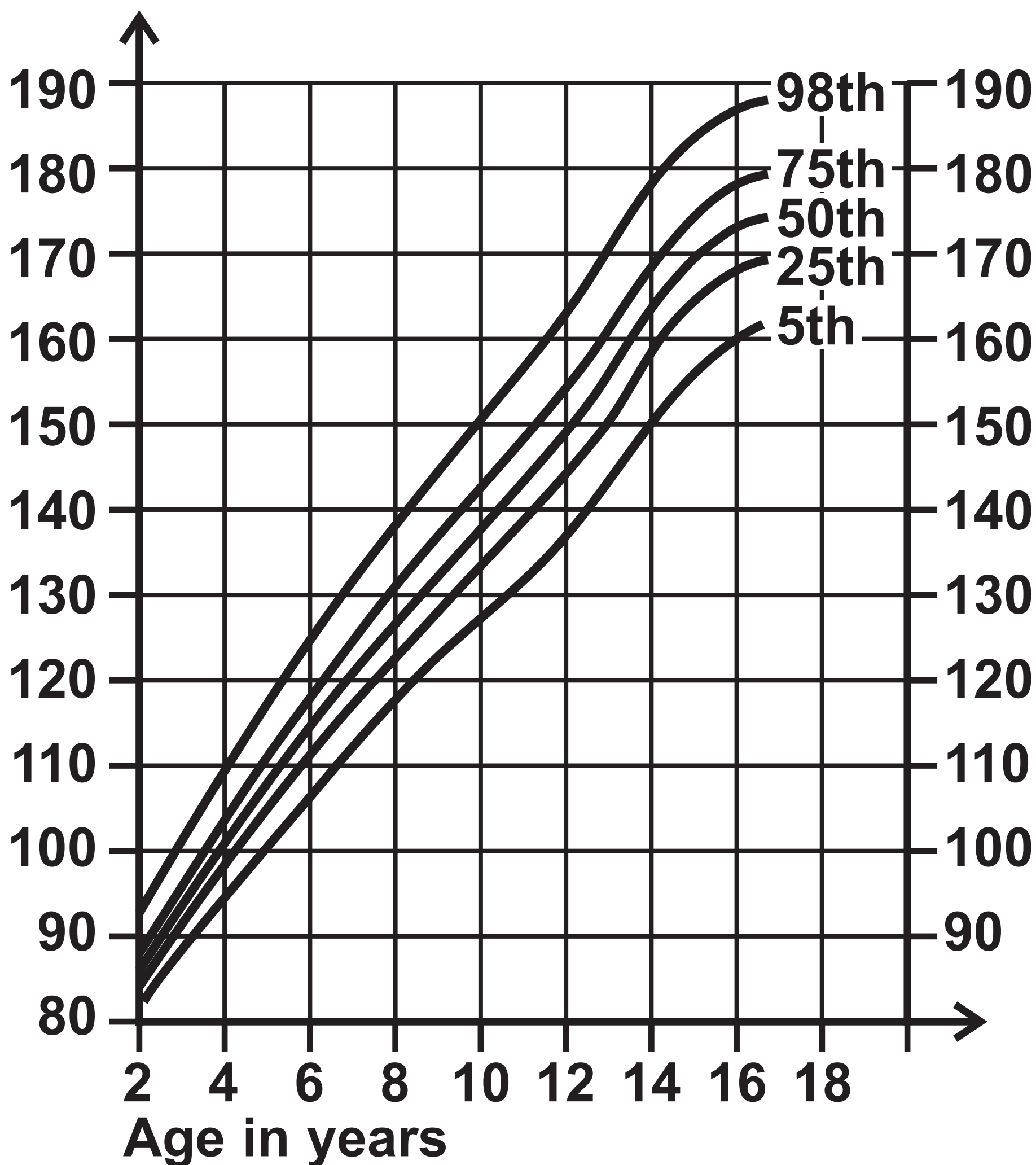
characteristic	plant K	plant L	plant M
size of leaves	small	large	small
striped leaves	none	none	green and white
flowers	small white	large white	large pink



## Question 6(a)

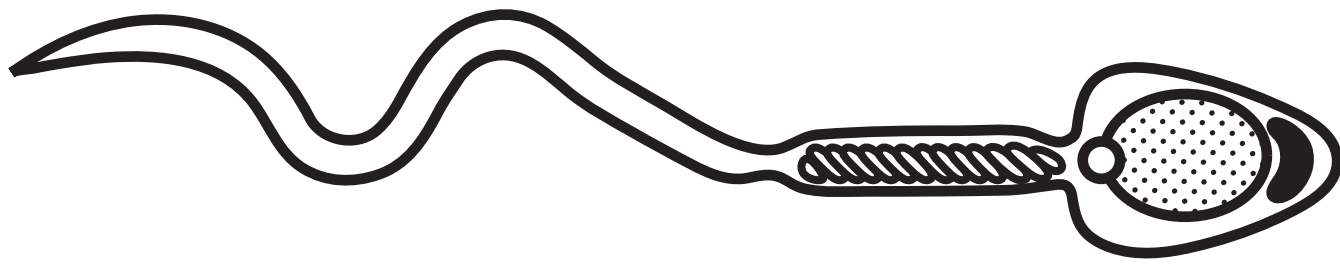
FIGURE 12

Height in cm



Question 6(b)(i)

FIGURE 13



Question 6(b)(ii)

TABLE 1

	mitosis	meiosis
number of daughter cells produced		
number of chromosomes in each daughter cell		

Question 6(b)(ii)

TABLE 1

	mitosis	meiosis
number of daughter cells produced		
number of chromosomes in each daughter cell		

21

## Question 7

**FIGURE 14**

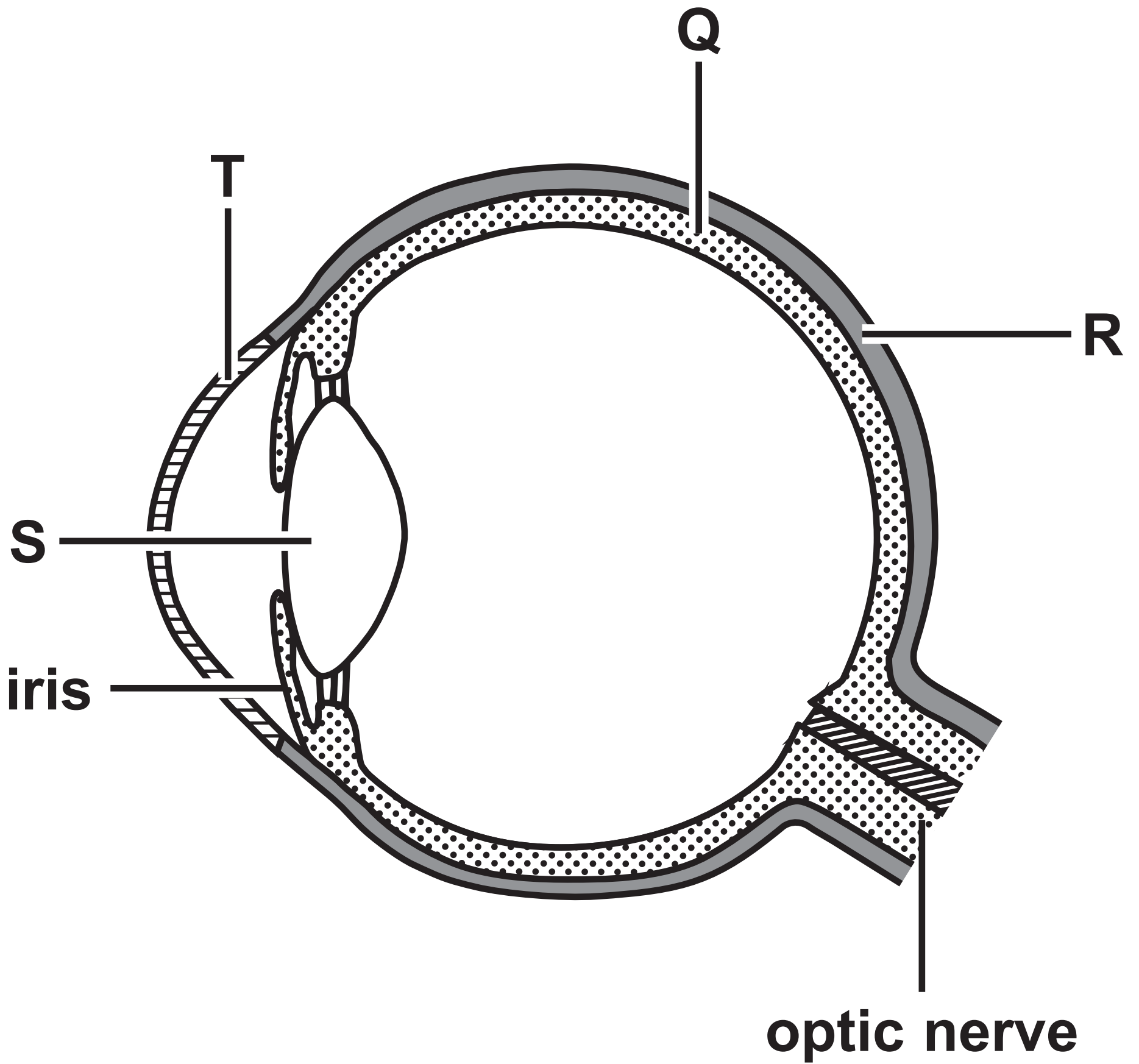
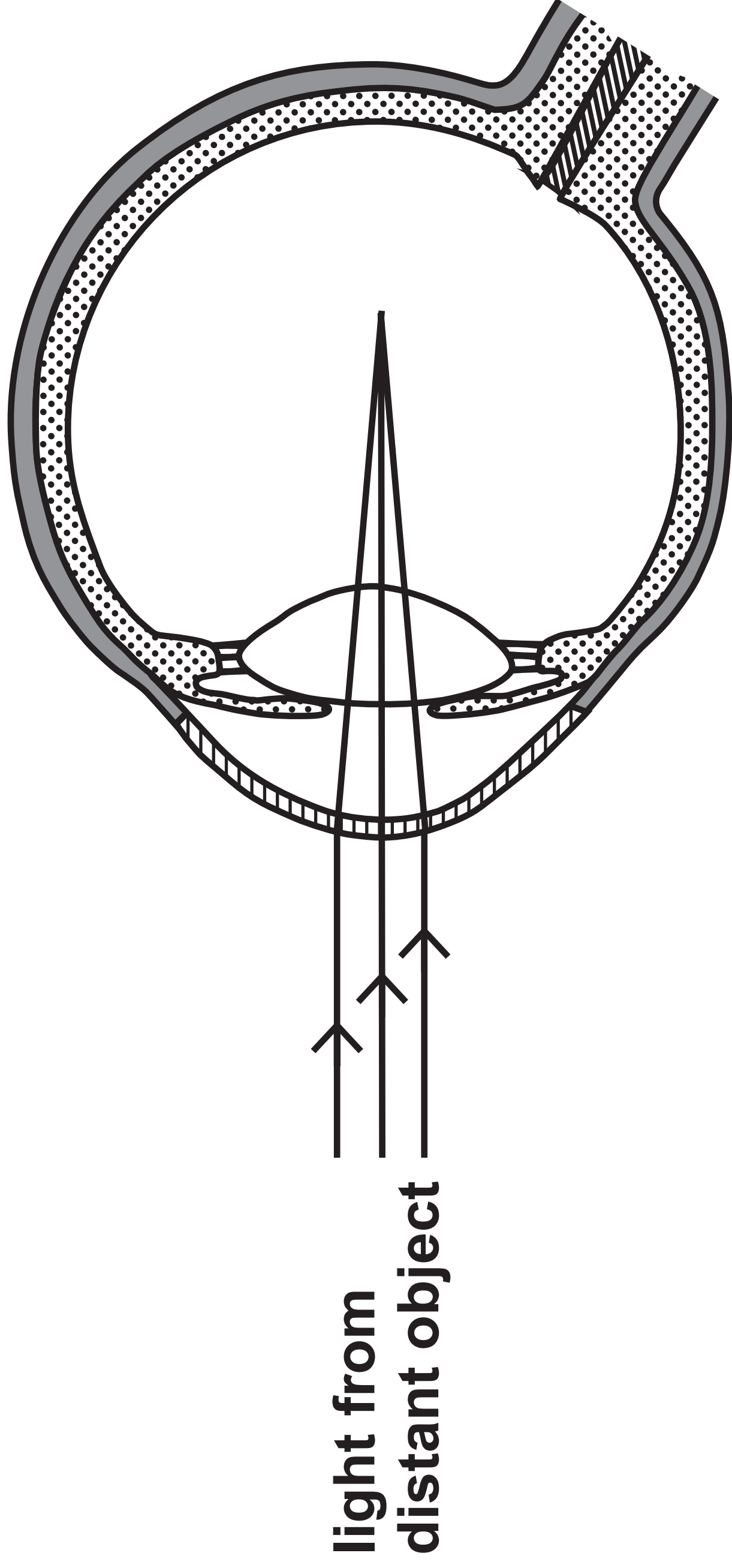


FIGURE 15



## Question 8(b)

# FIGURE 16

T	T	G	A	T	T	G	C	G	T	A	A
---	---	---	---	---	---	---	---	---	---	---	---

[illegible]

## Question 8(b)

# FIGURE 16

T	T	G	A	T	T	G	C	G	T	A	A
---	---	---	---	---	---	---	---	---	---	---	---

[illegible]



## Question 9(a)

FIGURE 17

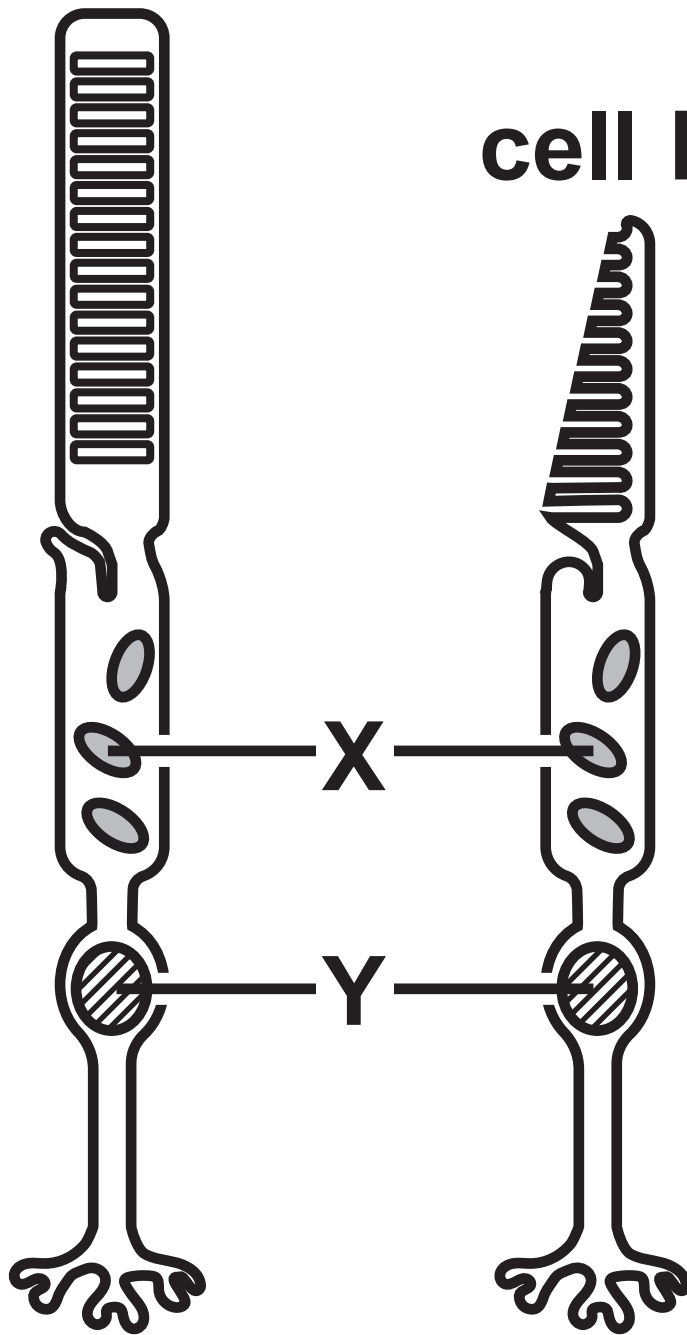
<b>sexually transmitted infection (STI)</b>	<b>number of people diagnosed per 1000 of the population</b>
<b>chlamydia</b>	<b>3·7</b>
<b>gonorrhoea</b>	<b>0·8</b>
<b>genital herpes</b>	<b>0·6</b>
<b>genital warts</b>	<b>1·1</b>
<b>syphilis</b>	<b>0·1</b>

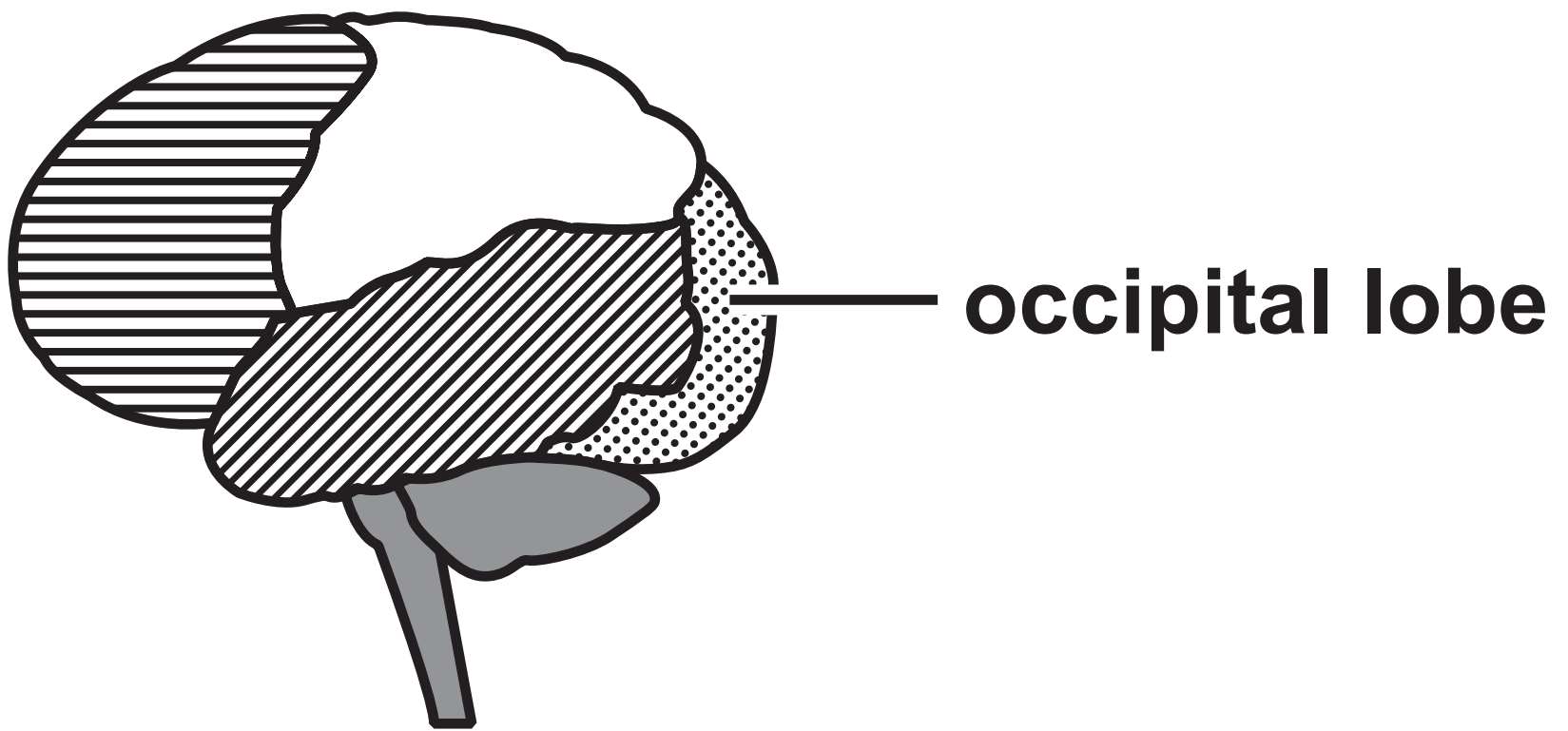
## Question 10(a)

FIGURE 18

cell A

cell B



**Question 10(b)(ii)****FIGURE 19**

**Question 3(c)**

**(Source: © Kristel Segeren/Shutterstock)**

**(Source: © Maurizio De Mattei/  
Shutterstock)**

**Question 10(a)**

**(Source: © Kokhanchikov/Shutterstock)**

**Question 10(b)(ii)**

**(Source: © Magic mine/Shutterstock)**